



64 Buckingham Road
Liverpool , L31 7DP
Asking Price £325,000

BerkeleyShaw
REAL ESTATE

Porch

Hallway

Kitchen

17'9 by 7'11 (5.41m by 2.41m)

Living Room

13'7 by 11'11 (4.14m by 3.63m)

Dining Room

17'9 by 10'3 (5.41m by 3.12m)

WC

3'6 by 2'7 (1.07m by 0.79m)

Master Bedroom

12'8 by 11'3 (3.86m by 3.43m)

Double Bedroom

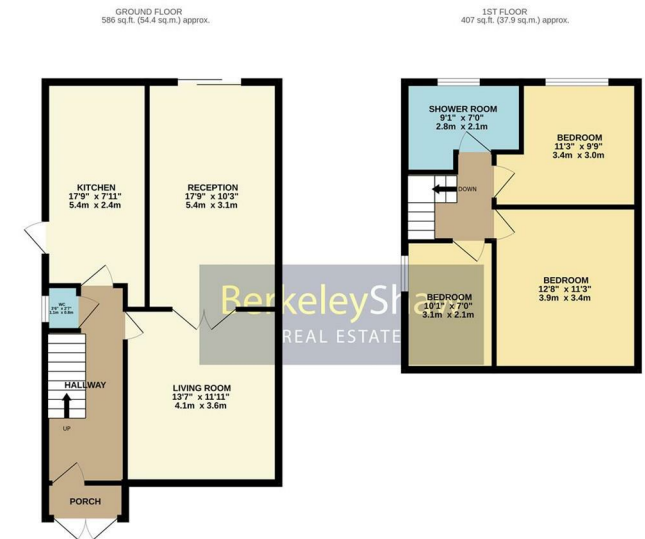
11'3 by 9'9 (3.43m by 2.97m)

Single Bedroom

10'1 by 7'0 (3.07m by 2.13m)

Shower Room

9'1 by 7'0 (2.77m by 2.13m)



TOTAL FLOOR AREA - 993 sq ft (92.3 sq m) approx.
 While every attempt has been made to ensure the accuracy of the floorplan contained here, measurements of blocks, distances, areas and any other details are approximate and no responsibility is taken for any error or omission on this statement. The plan is for guidance purposes only and should be used as such for any prospective purchase. The format, layout and appearance shown here are not to be used as a guarantee and to vary according to efficiency class. Made with Metropac 0202.

